

Special and Permanent Exhibitions

The museum exhibits 400 works. We hold a special exhibition every month, and replace about 50 works after the museum closes on the last day of the month. All permanent exhibits are replaced every three months. From July to September, we will feature word play with netsuke, and in July, we will introduce the subject attached by the artist himself, and in August, we will exhibit homonyms and anthropomorphic works. In September,

we will be exhibiting works that are highly rated on our official Instagram and X. From October to December, the exhibition will be titled "Netsuke in the Scroll of the Ages" and will include "The Beauty of Kyoto's Dynasties" in October, "Contest Grand Prix" in November, and "Nostalgic Netsuke" in December. From January to March 2025, under the title of "The Miracle of Netsuke,"

the exhibition "Fateful Encounters and Netsuke" will be held in January, "Netsuke in Shape" in February, and "The World and Netsuke in Connection" in March.



The Artist's Perspective Hiraga TANETOSHI

Mr. Tanetoshi grew up in a family of four generations of ivory carvers. He is known as an artist who is active as a haiku poet while inheriting superb craftsmanship.

"I leave a butterfly at the museum with a hard contact sound." by Taei Kakimoto

It is said that most works produced by artists, whether famous or unknown, should be considered bad works....

This is not the same as the common modesty of the artist himself, who says, "I don't have the best work. I have also heard young artists say that their work is "excrement..." in a self-deprecating, or perhaps just mistaken, way.

When asked by a great architect, "Which is your masterpiece?" he replied, "The next one".... This is a very wise statement. I will consider the "butterfly" in the opening haiku as my netsuke work.

He leaves behind a work of his heart's desire in the quiet Seisyu Netsuke art Museum. Holding the pride and lingering memories of the work in my heart, I leave before anyone notices. For a brief moment, we must aim for "the next one.

Mr. Tanetoshi often compares netsuke to haiku, the smallest form of literature, because of their small size and many restrictions. Haiku values the overflowing of emotion from outside the words, and even netsuke need to have a marginal space outside of the form. The skeleton is held by a raven and has one eye slightly closed, which opens the viewer's imagination as to whether the skeleton is disgusted or embarrassed. The margins of netsuke provide hints that remind us of the essence behind the expression.



[Raven Embracing Skull] H4.5cm

Hiraga TANETOSHI

Born in 1947 in Kyoto. He started making netsuke in 1973. He uses ivory and wood. His themes are people, animals, and skulls. He is also active as a haiku poet.



Special Exhibition for October to December 2024

An eternal romance refined by time.

"The gorgeous and spectacular world of Netsuke"

10 "The Dynastic Beauty of Netsuke"
■ October 1(Tue) - 31(Thu)

11 "Netsuke in all their glory"
■ November 1(Fri) - 30(Sat)

12 "Netsuke with nostalgic scenes"
■ December 1(Sun) - 29(Sun)

We are posting the latest information and images of the Museum on Twitter and Instagram. We hope you to follow us.

-Awarded 9th Mizuki Jugodo Prize from Yamato Koriyama City, Nara Prefecture

-Featured in the February issue of Katei-gaho

-Featured in the NHK TV program "The Mark of Beauty"

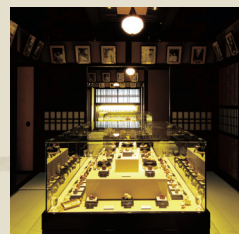


Official Website→



Kyoto Seishu Netsuke Art Museum

Contemporary Netsuke is the essence of Japanese aesthetics and craftsmanship. Many artists are creating netsuke works with adding new tastes. Kyoto Seishu Netsuke Art Museum is a museum that specializes in contemporary netsuke. We systematically collect, store, research and disclose documents and materials. Contemporary netsuke reflect social situation, technological progress and people's tastes of each era. Our mission is to contribute to the advancement of culture by researching contemporary netsuke from various viewpoints to investigate the characteristics of Japanese art.



As a leading company in the fields of printing and information processing, Sagawa Printing Co., Ltd. is supporting the Kyoto Seishu Netsuke Art Museum with the aim of passing Japanese culture to the next generation and developing global art.



[Index]

■ Exhibition Highlights

■ Frontier Research Today

■ Letter from Seishu Netsuke Art Museum

[Publisher]

Public Interest Incorporated Foundation
Kyoto Seishu Netsuke Art Museum
46-1 Mibukayougosho-cho Nakagyo-ku
Kyoto 604-8811 Japan
Phone: +81-75-802-7000
www.netsuke.jp/



The only contemporary netsuke art museum in the world

Special Exhibitions of Kyoto Seishu Netsuke Art Museum

Expressions reflecting the heart “The Essence and Mastery of Netsuke”

Netsuke not only reflect the object, but are also created by entrusting "feelings" to the form and composing them based on the meaning of words. This is not limited to netsuke, but is a common characteristic of Japanese arts and crafts. The fun of netsuke comes from the irony and

humor of seeing things from the side. Such fun is often cloaked in the rich world of words, such as homonyms, word-chain games, riddles, associations, and personification. It also has the function of reframing the viewer's perspective on daily life.

Expressions reflecting the heart
“The Essence and Mastery by Netsuke”

根付の心形展
思いが広がる
自由な表現

7月「根付しりとり」展 7月2日(火) - 31日(水)
8月「根付の言葉遊び」展 8月1日(木) - 31日(土)
9月「SNS根付王座決定戦」展 9月1日(日) - 29日(日)

京都 清宗根付館
Public Interest Incorporated Foundation
KYOTO SEISHU NETSUKU ART MUSEUM
〒604-8811 京都市中京区王生賀陽御所町46番地1 (王生寺東側)

SAGAWA PRINTING
佐川印刷株式会社は印刷及び情報加工の分野でのリーディングカンパニーとして、日本文化の継承と美術の発展を目指し、京都 清宗根付館を応援しています。

Promotional poster

7

Special Exhibition in July
“Japanese word-chain game by netsuke”
■ July 2(Tue) - 31(Wed)

Contemporary netsuke are characterized by the fact that the title is also part of the work, giving the piece a different interpretation. Netsuke artists create thought-provoking titles to enhance the subject matter of their work. The title gives a deeper interpretation of the work and provides a clue to the appreciation of the work.

8

Special Exhibition in August
“Netsuke reframed in rhetoric”
■ August 1(Thu) - 31(Sat)

Wordplay is an important element in Japanese arts and crafts. It is also used in netsuke to emphasize a subject or to evoke rich associations. Netsuke may also have an element of mystery, such as anthropomorphizing animals or vessels to give them symbolic meaning or to lead them into a story.

9

Special Exhibition in September
“SNS Netsuke Championship”
■ September 1(Sun) - 29(Sun)

The museum has been showing the exhibited works on Instagram and X. We received a great response from many people in Japan and abroad who viewed the site, became followers, and commented on it. We will show you the ranking of the works that received the most "likes" on social networking sites.



『 Netsuke Master 』
TETSURO (19601~)
H4.0cm
The work is a nested structure, with the netsuke carved by a netsuke master carving the netsuke.



『 Oops! 』
YUKO (1967~)
H3.2cm
At a summer festival, a cat plays a game of scooping goldfish, but is laughed at by the goldfish



『 Treasure Casket 』
KABU (1972~)
H6.8cm
A fox geiko carries a very luxurious jewelry box with great care. Inside the box is her favorite food, deep-fried tofu?



『 Late Autumn 』
KOZAN (1946~)
H5.1cm
On a mild day in early winter, think of the swans crossing the surface of the lake, glistening in the sunlight.



『 Telephone Operator by Kitten 』
MITSUKUNI (1959~)
H5.0cm
A cat is the telephone keeper at a prosperous store. But today, the phone doesn't ring because of the enemy rat!



『 Impression 』
KIHO (1957~)
H5.4cm
The impression of landing on the moon for the first time is superimposed on the orbits of the planets and the Mobius rings.



『 Sumo Wrestler Holding the Victory Star 』
YOKA (1968~)
H5.0cm
Sumo wrestlers were ranked on a star chart, with a white star as a win and a black star as a loss.



『 Happy Family 』
SETSUJI (1941~)
H2.6cm
Baked sweets in the shape of a sea bream are a typical Japanese confectionery. A happy parent and child taiyaki.



『 Delight 』
MIHO (1950~)
H6.3cm
Bathing in the sea in the summer is a delightful experience. Floating in the sea on a float is also a delight.



『 Komuso (Pilgriming Monk) 』
TOUN (1960~)
H3.7cm
The title is also taken from the personification of the tiger, which is a personification of the kumuso monk.



『 Manju of Poisonous Crab 』
MANSEI (1975~)
H5.1cm
This work attracted a lot of attention on SNS. The crab, made with superb craftsmanship, can move its leg joints.



『 Year-end Gift 』
KENJI (1974~)
H3.8cm
In the past, Japan's year-end gift was salmon. The joke these days is that it reaches polar bears in the North Pole.



『 Netsuke Toolbox 』
TAKESHI (1940~)
H3.0cm
Miniature of a set of tools such as blades and saws used in netsuke. The drawers can actually be taken out.



『 Strawberry Jam 』
JIYU (1999~)
H5.4cm
This work was highly acclaimed for its innovative ideas and new innovations due to its high technology.



『 Noh Mask 』
ISSHU (1917~2017)
H4.5cm
A work with impact, carved from various Noh masks and combined into an ellipse, as is typical of netsuke.