

Donated engraving knives, books, materials, etc.

Netsuke artist Ogaki Kokuu donated engraving knives, books, and other valuable materials to the Kyoto Seishu Netsuke Art Museum.

He had been an artist for many years in Yokohama City, Kanagawa Prefecture, and now that he has finished creating his works, his family has agreed to donate them to the Netsuke Museum to be used for the exhibition. When we visited the studio, we were surprised at the neat organization of materials, carving knives, whetstones, sandpaper,

dyes, and other tools used to create works of art. We could understand why his works in the museum's collection were created with exquisite and meticulous techniques. He also worked as a carpenter and built his desk for his creative work.

The museum will not only exhibit and preserve netsuke, but will also preserve valuable materials for future generations, and will devise ways to exhibit netsuke so that visitors can become familiar with them.



The forefront of Netsuke research "Transformation from an already existing object to the new fastener"

Kyoto Seishu Netsuke Art Museum
Curator
Kosuke (Tadakumo) Onishi

The people who hung multiple sagemono items from the hips were rising entertainers who incorporated elements of fashion from the flamboyant kabukimono deviants bedeviling the city streets with unmannerly behavior in those times.

What most troubles me, but also excites me as well, in this is the point that although the fastener as one item symbolizing the kabukimono was clearly depicted in pictorial historic sources, it was not recorded in textual historic sources from the same period. Herein, I believe that one idea can be put forth as a hypothesis as to why this is the case. This hypothesis is that, compared to the newly favored and novel hanging sagemono items, the fastener as an object attachable to the belt was viewed as a subordinate item, and was simply not noticed by the writers. If this is true, then it is possible that unlike the eccentric and new sagemono, these attachable items were

some sort of already existing item, or the usage method of employing some sort of object to bundle multiple items together was already known, and thus recording it in writing was simply not necessary. In other words, these attachable items fell within the scope of "already known or already existing." And considering that afterwards, the name fastener was given to these objects and they entered the realm of daily use items, I believe that it is a foregone conclusion that there was a major shift in value in this time period for attire and accessories. Which is to say, there was definitely an emergence of new value for the sagemono and the fastener both in terms of taste and socially, or in other words, a new social "reassessment" of attachable items. And is it only myself who feels that the source of the impetus for this was, just as in the Meiji period, an encounter with Western Europe, or the "barbarians" who accompanied the transformation of the world's political system?

Special Exhibition for April to June 2024

Fearless, pompous, so funny "Cool appearance of Netsuke"

4 "Individual, unique, diverse Netsuke"
■ April 2(Tue) - 30(Tue)

5 "Refined and Elegant Netsuke"
■ May 1(Wed) - 31(Fri)

6 "Smart and Stylish Netsuke"
■ June 1(Sat) - 30(Sun)

We are posting the latest information and images of the Museum on Twitter and Instagram. We hope you to follow us.

- Awarded 9th Mizuki Jugodo Prize from Yamato Koriyama City, Nara Prefecture
- Featured in the February issue of Katei-gaho
- Featured in the NHK TV program "The Mark of Beauty"



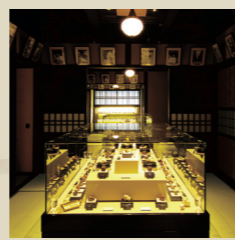
Official Website →



As a leading company in the fields of printing and information processing, Sagawa Printing Co., Ltd. is supporting the Kyoto Seishu Netsuke Art Museum with the aim of passing Japanese culture to the next generation and developing global art.

Kyoto Seishu Netsuke Art Museum

Contemporary Netsuke is the essence of Japanese aesthetics and craftsmanship. Many artists are creating netsuke works with adding new tastes. Kyoto Seishu Netsuke Art Museum is a museum that specializes in contemporary netsuke. We systematically collect, store, research and disclose documents and materials. Contemporary netsuke reflect social situation, technological progress and people's tastes of each era. Our mission is to contribute to the advancement of culture by researching contemporary netsuke from various viewpoints to investigate the characteristics of Japanese art.



[Index]

■ Exhibition Highlights

■ The forefront of Netsuke research Today

■ Letter from Seishu Netsuke Art Museum

[Publisher]

Public Interest Incorporated Foundation
Kyoto Seishu Netsuke Art Museum
46-1 Mibukayougosho-cho Nakagyo-ku
Kyoto 604-8811 Japan
Phone: +81-75-802-7000
www.netsuke.jp/



The only contemporary netsuke art museum in the world
Special Exhibitions of Kyoto Seishu Netsuke Art Museum

All small things are beautiful. "Netsuke with deep feelings"

Netsuke were born out of a playful spirit to enjoy everyday life and developed among the common people. Netsuke are characterized by the fact that they are alter egos that reflect the preferences of their owners. It also has the role of subtly showing good taste and the affordances of life. Netsuke artists also put their hearts and souls into making netsuke, wishing for good fortune and happiness

for the bearer. Netsuke have been cherished because of such deep feelings. Finding small joys in everyday life was and still is the same. In January, we will feature kawaii with a uniquely Japanese sensibility. In February, we will introduce netsuke with a playful and fashionable spirit. In March, we will bring together works selected by the artists themselves.

Netsuke with deep feelings

根付のある人

思い入れ

ちいさきものは、
みなうつくし。

1月「Kawaii!かわいい根付」展 1月6日[土]~31日[水]

2月「遊び心のある根付」展 1月6日[土]~31日[水]

3月「私が選ぶ一品」展 2月1日[木]~29日[木]

3月1日[金]~31日[日]

京都 清宗根付館
Public Interest Incorporated Foundation
KYOTO SEISHU NETSUKU ART MUSEUM
〒604-8811 京都市中京区壬生賀陽御所町46番地1(壬生寺東側)

詳細はホームページをご覧ください
当館は、2024年1月6日(土)より開館いたします。

Promotional poster

1 An aesthetic sense that loves imperfection and mystery

Special Exhibition in January “Kawaii What adorable Netsuke!”

■ January 6(Sat) - 31(Wed)

Kawaii" is now a global term. Kawaii is a popular and instinctive aesthetic that loves imperfections such as smallness and childhood, which are the opposite of ideal or perfect beauty. Today, kawaii has a diverse set of literal meanings, incorporating negative images such as unfashionable, ugly, and creepy. In January, we will introduce you to the netsuke of the Kawaii World.



『 Pastry Chef 』
KENJI (1974~)
H3.2cm
The squirrel is inlaid with three-dimensional inlay while utilizing the colors of boxwood and buffalo horn.



『 Pyramid of Raccoon Dogs 』
IZUMI (1968~)
H4.8cm
The work is named after the nickname "Raccoon Father" of the Edo period shogun Tokugawa Ieyasu.



『 Great Tea Bowl 』
AYA (1949~)
H4.0cm
The event of drinking tea from a large bowl has continued for 800 years. A frog opening its large mouth is humorous.



『 Rescue That Hippo 』
SHIGEJO (1963~)
H5.1cm
Small birds living in symbiosis with a hippopotamus, fight back against a crocodile to save the hippopotamus.



『 Ame-no-Uzume 』
SHINYA (1986~)
H7.6cm
From Japanese mythology, Amenouzume, a courageous and cheerful goddess, is represented in a charming way.

2 Bringing laughter and bizarre surprises

Special Exhibition in February “Netsuke with playfulness”

■ February 1(Thu) - 29(Thu)

Unexpected humor and surprise... Netsuke contain such a playful spirit. Playfulness is at the core of Japanese art. Netsuke have expressed the truth hidden in ridiculousness and charm. The pastimes favored by the common people translate into the subculture of today, and contemporary netsuke artists bring the present to life while indulging their playful spirit. We will focus on newly created works.



『 Children's Wrestling 』
TOSHI (1957~)
H4.4cm
This game is played by children pushing each other back and forth out of the circle, often in winter.



『 Parody of Waves and Rabbits 』
IPPU (1970~)
H4.5cm
Waves and rabbits symbolize prosperity and leaps forward. Here, a warlord wearing a rabbit helmet is seen surfing.



『 Unicorn's Holiday 』
KIHO (1957~)
H3.3cm
Shohei Ohtani, a world-class big leaguer, is nicknamed "Unicorn" for his pitching and hitting prowess.



『 Fox Princess 』
TANETOSHI (1947~)
H5.9cm
There are many folktales about foxes using sorcery to transform into humans, many of them beautiful princesses.



『 Straw Bird Festival 』
TOUN (1960~)
H4.8cm
The festival is a dance festival in which people wear straw coats and pray for prosperity and a good harvest.

3 Works reflecting authorship and narrative

Special Exhibition in March “Netsuke of the artist's choice”

■ March 1(Fri) - 31(Sun)

This month, we present a piece selected by the artist himself. Contemporary netsuke emphasize authorship, and their works project a narrative or one's own inner self. The different creative styles of each artist are also a highlight. We hope you will enjoy this project, which is unique to the museum's aim to be "an art museum that advances with contemporary artists.



『 Wish for the Future 』
AKIRA (1941~)
H7.3cm
The work is covered with flowers and ivy, and the soldiers' graves and rifles represent repose and peace.



『 Imaginative Boys Expedition Team 』
KUKAN (1968~) H3.9cm
Childhood's endless curiosity is a constant source of surprise and excitement. To remember that spirit of adventure.



『 Grandma 』
ITARO (1961~)
H4.9cm
The work is full of the artist's love for his family, who cherish his parents who are over 90 years old.



『 Gods of Thunder and Wind 』
TETSURO (1960~)
H4.3cm
The artist's skill is on full display as he states, "All six sides of the netsuke are highlights of the piece."



『 Peddler from Ohara 』
MOTOMASA (1976~)
H6.3cm
Ohara women peddling firewood and bushes on their heads were a Kyoto tradition reminiscent of the olden days.