

Takegawa Ninomaru Art Museum Special Exhibition for the 25th Anniversary “Micro Cosmos in your Palm. PLAYING with NETSUKÉ” September 24 (Sunday) - November 19 (Sunday), 2023

The Takegawa Ninomaru Art Museum in Shizuoka Prefecture, located in Takegawa Castle Park, houses a collection of approximately 2,000 exquisite artifacts related to smoking and decoration from the Edo to Meiji periods. The Ninomaru Art Museum and the Kyoto Seishu Netsuke Art Museum will collaborate to present this special exhibition.

The curator of the Ninomaru Art Museum, who specializes in arts and crafts, has selected from the Kyoto Seishu Netsuke Art Museum's collection approximately 400 pieces of artwork that follow themes and highlight various aspects of Contemporary Netsuke. This is a special exhibition full of highlights.



The forefront of Netsuke research "Sagemono the spirit of rebellion"

In historical paintings, the figures who wore sagemono (items hanging from the belt) via small devices (fasteners) were the emerging female performers who had gained immense popularity in the capital. Their costumes imitated the rowdy kabukimono who were causing a stir in Kyoto at that time. But what about treatment in text? How were sagemono and fasteners documented in historical text reference materials that recorded customs from the Tensho era to the Keicho era (1573-1615)? "Kabuki no Saushi" (A Book on Kabuki, early Edo period), which depicts female kabuki dancing performers, mentions not only the gorgeous lead costumes, but also lacquerware inro cases, large gold cloth kinchaku bags, and golden gourd containers. What must not be overlooked here is the author's surprise and amazement over the sagemono hanging from the hips. This sort of wording clues us into the sheer novelty of sagemono at that time

and the vivid sense of sociality carried by the style in which sagemono were worn. And thinking of a style of dressing in which multiple sagemono are hung from the hip, the first thing we tend to remember before all of that is the adornment of Oda Nobunaga (1534-1582) in his young days as recorded in "The Chronicle of Lord Nobunaga". An overabundance of sagemono was added to give the effect of adornment meant to illustrate the foolishness of Nobunaga. And this way of wearing sagemono evoked the image of "a low ranking man", which was an inversion of his standing and position. Looking at it in this way, we could say that the style of wearing sagemono in a way that was extreme in terms of quality or quantity could be imbued with a sense of expressing a spirit of rebellion or an inversion of norms.

Kyoto Seishu Netsuke Art Museum Curator
Kosuke (Tadakumo) Onishi

Special Exhibition for January to March 2024

All small things are beautiful "Netsuke with affection" 2024

- 1 "Kawaii! What adorable netsuke!"
■ January 6(Sat) - 31(Wed)
- 2 "Netsuke with playfulness"
■ February 1(Thu) - 29(Thu)
- 3 "Netsuke of the artist's choice"
■ March 1(Fri) - 31(Sun)

We are posting the latest information and images of the Museum on Twitter and Instagram. We hope you to follow us.

- Awarded 9th Mizuki Jugodo Prize from Yamato Koriyama City, Nara Prefecture
- Featured in the February issue of Katei-gaho
- Featured in the NHK TV program "The Mark of Beauty"



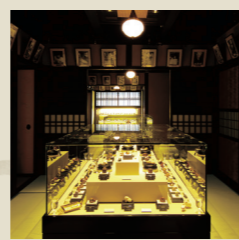
Official Website →



As a leading company in the fields of printing and information processing, Sagawa Printing Co., Ltd. is supporting the Kyoto Seishu Netsuke Art Museum with the aim of passing Japanese culture to the next generation and developing global art.

Kyoto Seishu Netsuke Art Museum

Contemporary Netsuke is the essence of Japanese aesthetics and craftsmanship. Many artists are creating netsuke works with adding new tastes. Kyoto Seishu Netsuke Art Museum is a museum that specializes in contemporary netsuke. We systematically collect, store, research and disclose documents and materials. Contemporary netsuke reflect social situation, technological progress and people's tastes of each era. Our mission is to contribute to the advancement of culture by researching contemporary netsuke from various viewpoints to investigate the characteristics of Japanese art.



[Index]

- Exhibition Highlights
- The Forefront of Netsuke Research
- Letter from museum

[Publisher]

Public Interest Incorporated Foundation
Kyoto Seishu Netsuke Art Museum
46-1 Mibukayougosho-cho
Nakagyo-ku Kyoto 604-8811 Japan
Phone: +81-75-802-7000
www.netsuke.jp/



The only contemporary netsuke art museum in the world
Special Exhibitions of Kyoto Seishu Netsuke Art Museum

Toward the Pinnacle of Japanese Beauty “Dignity of Netsuke Art”

The Japanese sense of beauty, which values the changing seasons and nature, has been carefully refined in every aspect of daily life. It extends to the furnishings and utensils that surround us. In "Takaragura" (published in 1671), in which "netsuke" first appeared, the author wrote, "When I see how the netsuke are made, I am very much

intrigued. Netsuke, the crystallization of urban culture, has captivated connoisseurs with its unique and dignified taste created by painstaking workmanship. This exhibition will focus on the theme of "Dignity in Netsuke," and will look at the emergence of the Japanese aesthetic sense.

日本の美、ここに極まれり。
Toward the Pinnacle of Japanese Beauty "Dignity of Netsuke Art"

10月
小さきもの、はかきものへの根付賛歌。
「日本の美」展
10月1日(日)～31日(日)

11月
栄光のいなきへ! 根付に込めた思い。
「秋の名品」展
11月1日(日)～30日(日)

12月
歴史を語る、時代を切り拓いた人物たち。
「根付 英雄列伝」展
12月1日(日)～28日(日)

京都 清宗根付館
Public Interest Incorporated Foundation
KYOTO SEISHU NETSUKÉ ART MUSEUM
〒604-8811 京都市中京区壬生賀陽御所町46番地1 (壬生寺東側)

Promotional poster

10 A netsuke hymn to the small and transient.

Special Exhibition in October "Beauty of Japan"

■ October 1(Sun) - 31(Tue)

In arts and crafts, the Japanese sense of beauty has developed its own unique style through bold asymmetrical compositions, superb detailing, and the symbolism of beauty in imperfection. In this month's exhibition, contemporary netsuke artists will introduce new works based on the theme of rediscovering the appeal of "Japanese beauty."



「 Spring and Fall 』
SHUKO (1954~)
H3.7cm
The mixture of cherry blossoms in spring and autumn leaves in fall reminds us of the passage of time.



「 Beauty of the Seasons 』
AKEMI (1959~)
H3.5cm
The snow, moon, and flowers reflect the aesthetic sense of Japanese people who enjoy nature and the four seasons.



「 New Year's Day 』
DOSAI (1950~)
H5.9cm
Hagoita, a wooden racket, is used to wish for the growth and good health of girls.



「 Rake for luck 』
YUKO (1852~)
H3.6cm
The Bamboo rake are gorgeously decorated with many lucky charms for prosperous business.



「 Netsuke Ambassador Miss Seiko 』
YOKA (1968~)
H6.9cm
This work features a doll carrying a netsuke as a goodwill ambassador of Japanese beauty.

11 To the top of glory! Passion for netsuke.

Special Exhibition in November "Autumn Masterpieces"

■ November 1(Wed) - 30(Thu)

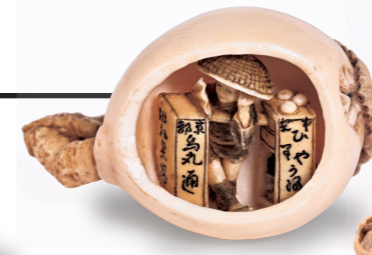
In the four-century history of netsuke, which began in Kyoto, netsuke artists have explored new expressions and techniques. Netsuke, which was born and loved in Japan, is now spreading around the world as "NETSUKE". Our museum has established the GOLDEN NETSUKE AWARDS to encourage new challenges by contemporary artists. This year's award-winning and nominated works will be exhibited together.



THE GOLDEN NETSUKE AWARDS
GRAND PRIX
「 Delightful Fellow 』
KUKAN (1968~)
H4.3cm
A monkey and an ogre arm wrestle. The characters of Momotaro's story are enjoying themselves amicably.



THE GOLDEN NETSUKE AWARDS
GRAND PRIX
「 Drinking alone 』
MOTOMASA (1976~)
H4.7cm
A woman alone, feeling lonely because she had been dumped by a man, felt the taste of alcohol differently.



THE GOLDEN NETSUKE AWARDS
AWARD OF EXCELLENCE
「 Selling loquat leaf tea 』
TOUN (1960~)
H3.1cm
A drink made by infusing loquat leaves and Chinese herbs. Peddlers carrying a balance pole were a popular summer event.



THE GOLDEN NETSUKE AWARDS
AWARD OF EXCELLENCE
「 Balance scale with rats 』
TADATSUNA (1966~)
H1.8cm
The portable balance symbolizes commerce, and the rat is the messenger of Daikoku, inviting good fortune.



THE GOLDEN NETSUKE AWARDS
CHAIRMAN'S AWARD
「 Kagami Jishi 』
TERUO (1936~)
H6.9cm
The leading artist of Shibayama Zogan. The moment when the lion jumped up. Inside the box are red and white peonies.

12 The people who spun history and built the era.

Special Exhibition in December "Netsuke of Japanese Heroes"

■ December 1(Fri) - 28(Thu)

History is not merely an event of the past, but a human drama that has been passed down from one person to another. In December, we will welcome you with a large collection of netsuke featuring the great and wise people of history, the last of this year's splendid cast.



「 Guan Yu 』
TETSURO (1960~)
H6.1cm
Guan Yu was a hero of the Three Kingdoms period. He was later deified as "Guan Di Sheng Jun".



「 Sesshu 』
MASATOSHI (1915~2001)
H3.4cm
This work is based on an episode in which a rat drawn by Sesshu became a real rat.



「 Zato (Blind Man) 』
AKIHIDE (1960~)
H6.6cm
Zato is a blind man who has shaved his head. A pun on the Japanese word for no hair and no injury.



「 Jesus Christ holding a cross 』
HIDEYUKI (1941~)
H6.5cm
Jesus is the founder of Christianity, which now has 2.4 billion followers. His deep anguish is expressed.



「 Baisaou 』
ITARO (1961~)
H4.7cm
He was a Zen monk who popularized the sencha tea ceremony and opened a salon where cultural figures gathered.