

We have authorized photography in the museum starting April 1, 2023.

In response to requests from visitors, the museum has lifted the ban on photography. It is often said that there are as many designs for netsuke as there are tastes, and visitors are welcome to take photos of their favorite pieces to document their travels. You are also welcome to share your photos on social networking sites in a moderate manner.

In addition, from now on, you will be able to send us photos of the interior of the museum as well. The museum is a historical samurai residence built in 1820

and registered as an important cultural property of Kyoto City.

The museum's official Instagram and Twitter feeds provide information on the highlights of the netsuke and the intentions of the netsuke artists, as well as scenes from the exhibition. We want to share our times with you by bringing you the voices of artists who live in the same "now".

Finally, we would like to thank everyone involved for their understanding of our efforts.

The forefront of Netsuke research "The spirit of kabuki and birth of the fastener"

Looking over the genre paintings created around the Keicho era (1596-1615), the viewer may notice that sagemono (items hanging from the belt) were worn not on the left side, but mainly on the right hip instead, and that changes emerged in the way sagemono were worn. And if one focuses on the actual sagemono depicted therein, one can identify sagemono that are clearly different, in terms of quality, from what came before. These are sagemono depicted on female performers in works such as "Amusements at the Dry Riverbed, Shijo". They are clearly different from the sagemono worn by townspeople depicted in "Scenes in and around the Capital". The sagemono in the later are utilitarian, while those in the former are decorative. Or, another way of looking at it is, the sagemono in the later are concrete items that possess a practical purpose, while those in the former are depicted as figurative items, as if they express some kind of symbol. And where these decorative and

symbolic sagemono are depicted, for the first time "fasteners" are depicted, which is to say, small devices fastening sagemono to belts. These fasteners are ring shaped, and are depicted on the wastes of female performers as if to indicate a singular style. These female performers were actually not depicted in genre paintings before this, and were a new kind of performer that arose in this era. This new kind of performance was called kabukiodori (early kabuki dance). The origin of the extravagant costumes of these performers was the style of kabukimono, licentious performers fond of eccentric behavior who had Kyoto in a buzz. The question of whether the potential for fasteners was first discovered by kabukiodori inceptor Okuni, or by the kabukimono, whom she imitated, is something that inflames the imagination. Either way, the one thing that is definite is that the kabukimono spirit did infuse the birth of the fasteners.

Kyoto Seishu Netsuke Art Museum Curator
Kosuke (Tadakumo) Onishi

Special Exhibition for October to December 2023

Toward the Pinnacle of Japanese Beauty
"Dignity of Netsuke Art"

10 Special Exhibition in October "Beauty of Japan"
■ October 1(Sun) to 31(Tue)

11 Special Exhibition in November "Autumn Masterpieces"
■ November 1(Wed) to 30(Thu)

12 Special Exhibition in December "Historical Figures"
■ December 1(Fri) to 28(Thu)

We are posting the latest information and images of the Museum on Twitter and Instagram. We hope you to follow us.

- Awarded 9th Mizuki Jugodo Prize from Yamato Koriyama City, Nara Prefecture
- Featured in the February issue of Katei-gaho
- Featured in the NHK TV program "The Mark of Beauty"



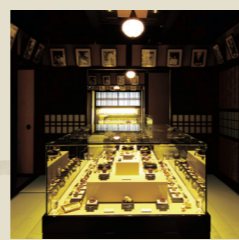
Official Website→



As a leading company in the fields of printing and information processing, Sagawa Printing Co., Ltd. is supporting the Kyoto Seishu Netsuke Art Museum with the aim of passing Japanese culture to the next generation and developing global art.

Kyoto Seishu Netsuke Art Museum

Contemporary Netsuke is the essence of Japanese aesthetics and craftsmanship. Many artists are creating netsuke works with adding new tastes. Kyoto Seishu Netsuke Art Museum is a museum that specializes in contemporary netsuke. We systematically collect, store, research and disclose documents and materials. Contemporary netsuke reflect social situation, technological progress and people's tastes of each era. Our mission is to contribute to the advancement of culture by researching contemporary netsuke from various viewpoints to investigate the characteristics of Japanese art.



[Index]

■ Letter from Seishu Netsuke Art Museum

■ The Forefront of Netsuke Research

[Publisher]

Public Interest Incorporated Foundation
Kyoto Seishu Netsuke Art Museum
46-1 Mibukayougosho-cho
Nakagyo-ku Kyoto 604-8811 Japan
Phone: +81-75-802-7000
www.netsuke.jp/



The only contemporary netsuke art museum in the world

Special Exhibitions of Kyoto Seishu Netsuke Art Museum

"Curiosity for the unknown world of Netsuke"

What do you think of summer? The sun shining, white clouds, the sound of cicadas, the sea breeze, the Obon Festival, going home, Bon dances and other events with family and friends, and daring challenges in sports, all make summer an unforgettable experience. Summer experiences always open doors to the unknown. And this year, summer is here again, and it will inspire us all. This summer, we will introduce the

mysterious world under the title of "Curiosity for the unknown world of Netsuke". The July exhibition is titled "Heated Competition" and will feature exciting and passionate battles. August's special exhibition will feature scary beings as "Inhabitants of Another World". In September, the exhibition "Longing to Travel" invites you to go to places you have not yet seen.

Promotional poster

7 Heartbreaking emotion. Drama of reversal.

Special Exhibition in July “Heated Competition”

■ July 1 (Sat) to 30 (Sun)

Summer is a season of battles in many sports. The crowning glory of the winners is due to many trials and wits. Looking around us, we see that battles are not limited to sports. There are many small battles that take place in our daily lives as well. The drama of life is condensed in the game.



「 Sumo Wrestling 」
MASATOSHI (1915~2001)
H6.1cm

A winning trick in sumo. This work carves out the moment of a wrestler's reversal of position.



「 Bear Hunter 」
JIN (1956~)
H4.8cm

Matagi, who hunt for a living, give thanks to the bear, a gift from the mountain gods.



「 Hook-suke 」
KENJI (1974~)
H4.0cm

A Fukusuke doll, which invites happiness, and a cat, which invites good fortune, are performing a boxing hook (Fuku).



「 Eagle and Monkey 」
MEIGYOKUSAI (1896~1991)
H3.6cm

In Buddhism, it means a monkey, which represents human vexation, and an eagle, which saves it.



「 Stuck in Bamboo 」
KANGYOKU (1944~)
H6.9cm

The strong and big do not always win. Sometimes a small rat can even defeat a big tiger.

8 The important things are always invisible!

Special Exhibition in August “Inhabitants of Another World”

■ August 1 (Tue) to 31 (Thu)

In Japan, there is a custom in August to thank and make offerings to the spirits of ancestors. Festivals in which everyone dances together are a summer tradition. Summer is also the season for interaction with the inhabitants of other worlds. Led by King Yama, ghosts, spirits, demons, specters, and even aliens from mythology gather at our museum.



「 Hell King 」
KODO (1940~)
H4.2cm

It is said that Yama was the first human being to die, discover the way of death, and become king.



「 Water Nymph 」
MITSUYUK (1932~)
H5.0cm

The water nymphs in fairy tales test the integrity of humans with abilities beyond human understanding.



「 From Outer Space 」
IPPU (1970~)
H6.0cm

An alien holds an alien netsuke in his hand and thinks of his faraway home planet.



「 Venus (New World) 」
KUKAN (1968~)
H3.0cm

The awakening of Venus is superimposed on the emergence of a sublime new world.



「 Festival of Apparitions 」
KIHO (1957~)
H3.2cm

Demons and specters lurk in the darkness, but in this work they are amused by the summer festival.

9 Let's find a piece of your heart.

Special Exhibition in September “Longing to Travel”

■ September 1 (Fri) to 30 (Sat)

By visiting previously unknown places and experiencing things for the first time, people are freed from their daily routines and discover their true selves. In other words, people yearn to travel in order to find a hole in their hearts. Netsuke also have many travel-related themes. The museum's collection will take you on a journey through time and space.



「 On Journey 」
TOSHI (1957~)
H3.4cm

Dosojin, placed at the village border as a guardian deity of the village, is the first to greet travelers.



「 Sanjo-ohashi Bridge Sign 」
H6.4cm
「 Nihon-bashi Bridge Sign 」
H6.4cm
TOUN (1960~)

Netsuke representing the starting and ending points of the Tokaido Highway, which caused a travel boom in the



「 Paradiso for Hummingbirds 」
KINUYO (1959~)
H3.7cm

The flowers and hummingbirds that bloom in this paradise of everlasting summer are a symbol of peace.



「 Don Quixote 」
ITARO (1961~)
H5.7cm

An adventurous journey of an old knight who has read too many chivalric tales to distinguish them from reality.