

In this issue, we report on the "Netsuke's Evening," the 28th gathering of artists organized by the Kyoto Seishu Netsuke Museum on Saturday, October 8, 2022.

At this event, the chairman of our museum will report to the artists on the results of their activities and future plans. The artists then showed their new works to the Chairman. The artists themselves shared their intentions, difficulties, and highlights of their work with the chairman and us curators. The chairman, from his perspective as a collector for about 50 years, discussed ideas for the next work, offered compositional suggestions, and encouraged them to try new challenges.

Through this experience, the artists have a

clear goal in mind, and they are eager to work on their new works with renewed enthusiasm. In addition, since 20 artists from various backgrounds participated, there was a lively exchange of information among them on their production techniques and activities.

The Kyoto Seishu Netsuke Museum is not just a box for displaying works, but also a bridge between viewers and artists, with the goal of inheriting and developing netsuke culture.



The forefront of Netsuke research "The wellspring of contemporary Netsuke"

The author senses a commonality between contemporary Netsuke and the noh aesthetic of nohgaku performance art master Zeami (1363-1443). Zeami instilled the popular entertainment practice of "mimicry" in the world of "yugen" (a world that refutes mere decorative flamboyance), which is a world of waka poetry that expressed the ideals of courtly culture. By fusing the dichotomy that arises between those two contradictory elements, he elevated the performing arts. And in the same way, superior works of contemporary Netsuke also transcend the simple dichotomy of feeling pleasant or unpleasant, and pierce deep into our innermost hearts. The reason for this is that the Netsuke artist also captures, in Zeami's words, the straightforward stance of seeing through to the pure essence of a thing and striving to express that, as well as the primal human emotion that is

sparked when opening oneself up to the world of nature. Furthermore, within the concept of yugen, Zeami taught kyogen performers to strive for a "sense of humor" in which "joy is contained within the smile." This intellectual exploration of the motif as represented in this concept of "humor" is in fact the origins of the world of Netsuke, and is also the source of the universal and creative power that has unceasingly continued to infuse contemporary Netsuke as well. It is my hope that you will also view contemporary Netsuke through the lens of it being an effort to fuse together the two opposites of "the common" and "the refined" through the mediation of laughter.

Kyoto Seishu Netsuke Art Museum Curator
Kosuke (Tadakumo) Onishi

Special Exhibition for April to June 2023 Back to the Beginning of Contemporary Netsuke 1973→2023

- | | | |
|--|--|--|
| <p>4 Special Exhibition in April
"Inheritance and Innovation"
■ April 1 (Sat) to 30 (Sun)</p> | <p>5 Special Exhibition in May
"Diversification and Expression"
■ May 2 (Tue) to 31 (Wed)</p> | <p>6 Special Exhibition in June
"Revival and Reconstruction"
■ June 1 (Thu) to 30 (Fri)</p> |
|--|--|--|

We are posting the latest information and images of the Museum on Twitter and Instagram. We hope you to follow us.

- Awarded 9th Mizuki Jugodo Prize from Yamato Koriyama City, Nara Prefecture
- Featured in the February issue of Katei-gaho
- Featured in the NHK TV program "The Mark of Beauty"



Official Website

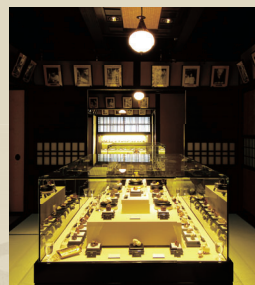


Measures to Prevent the Spread of COVID-19

- At the entrance the museum staff would measure your body temperature by non-contact thermometer and spray alcohol on your fingers. (If your body temperature is 37.5 degrees (Celsius) or higher, you may be refused to enter)
- We would ask you to write down your full name and address when entering the museum, as a countermeasure in the event that visitors or staff members were found to be a carrier.
- Please wear a mask inside the museum.

Kyoto Seishu Netsuke Art Museum

Contemporary Netsuke is the essence of Japanese aesthetics and craftsmanship. Many artists are creating netsuke works with adding new tastes. Kyoto Seishu Netsuke Art Museum is a museum that specializes in contemporary netsuke. We systematically collect, store, research and disclose documents and materials. Contemporary netsuke reflect social situation, technological progress and people's tastes of each era. Our mission is to contribute to the advancement of culture by researching contemporary netsuke from various viewpoints to investigate the characteristics of Japanese art.



As a leading company in the fields of printing and information processing, Sagawa Printing Co., Ltd. is supporting the Kyoto Seishu Netsuke Art Museum with the aim of passing Japanese culture to the next generation and developing global art.



[Index]

- Exhibition Highlights
- Letter from Museum
- Frontier Research Today

[Publisher]

Public Interest Incorporated Foundation
Kyoto Seishu Netsuke Art Museum
46-1 Mibukayougosho-cho
Nakagyo-ku Kyoto 604-8811 Japan
Phone: +81-75-802-7000
www.netsuke.jp/



The only contemporary netsuke art museum in the world Special Exhibitions of Kyoto Seishu Netsuke Art Museum

Japanese Culture and Aesthetics through Netsuke "The Wonderful Ordinary World"

The lyricism in netsuke is brought about by ethos for the passage of the four seasons and a delicate sense of beauty. It has taken root in people's daily lives, with bright intellectual beauty being expressed as "wokashi," and deep emotional beauty being described as "mono no aware".

Such a sense of beauty derives from the Japanese view of nature. At times, people have been in awe of the fury of nature and have found a god beyond human comprehension. In addition, we have

superimposed a state of impermanence on the passage of time. In particular, "small and lovely" or "scaled-down" objects were preferred over "large and powerful" objects. This gave rise to the "reduced world view" of netsuke.

The charm of netsuke is to find the providence of all things in small objects and to feel the eternal true value in an ordinary, everyday item. This exhibition introduces netsuke that find rich beauty in ordinary days.

根付
風物詩展

人のいとなみに
寄り添う根付

根付に宿る豊かな抒情性は、四季の移ろいを愛でる風土と繊細な美意識によってもたらされます。日々の暮らしに目を向ける「根付風物詩」をテーマに、人のいとなみに寄り添う根付たちを紹介します。

一月 めでたき八百萬の神が大集合
「根付の神様」展
6日(金)～31日(火)

二月 食をいどころの味のある根付
「根付の食卓」展
1日(水)～28日(火)

三月 こころが響いたす 風流な根付
「根付歳時記」展
1日(水)～31日(金)

The Wonderful Ordinary World
Japanese Culture and Aesthetics through Netsuke

Special Exhibition in January
"Deities in Netsuke"
■ January 6 (Fri) to 31 (Tue)

Special Exhibition in February
"Delicious looking Netsuke"
■ February 1 (Wed) to 28 (Tue)

Special Exhibition in March
"Seasons depicted by Netsuke"
■ March 1 (Wed) to 31 (Fri)

京都 清宗根付館
KYOTO SEISHU NETSUKU ART MUSEUM
〒604-8811 京都府中京区西本願寺町46番1号 電話: 075-802-7000

Promotional poster

1 Feast of auspicious Gods.

Special Exhibition in January “Deities in Netsuke”

■ January 6 (Fri) to 31 (Tue)

At the exhibition, various deities gather to celebrate the New Year. In Japan, since ancient times, people have prayed to the gods to grant various requests. Starting with the gods of mythology, there are countless gods in the heavens, ancestors, mountains, rice paddies, house gates, pillars, kitchens, and even old tools, all living together in our daily lives. We welcome the Netsuke Gods and pray for the fulfillment of all our wishes.



『 God of Wealth 』
ISSHU (1917~)
H5.2cm
A deity that has been worshipped since ancient times, bestowing happiness and benefits to people.



『 Suseri-hime 』
SHINYA (KANMEI) (1986~)
H5.4cm
In Japanese mythology, she is the daughter of Susanoo and the wife of Ooanamuji (later Okuninushi).



『 Amaterasu 』
KIHO (1957~)
H3.5cm
The world of mythology, reminiscent of the great eruptions of prehistoric times, is expressed on a dynamic scale.



『 Shaman 』
TANETOSHI (1947~)
H6.2cm
The work is inspired by Himiko of ancient Japan, hoping for the blessings of the gods.



『 Laughter Invites Light 』
TOSHI (1957~)
H4.3cm
The dancing of the female deity brought light back from the dark world, along with laughter.

2 Attractive netsuke featuring a scene of eating.

Special Exhibition in February “Delicious looking Netsuke”

■ February 1 (Wed) to 28 (Tue)

The one happiness that has remained unchanged in all times and places is a meal. The exhibition will feature netsuke based on culinary themes that add color and liveliness to everyday life. The abundance of natural ingredients has created a diverse food culture. Home cooking, in particular, has been handed down from generation to generation and becomes your own special memory. We have gathered together a collection of netsuke that evoke such scenes and memories.



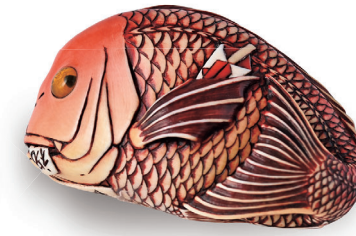
『 Sushi 』
JIN (1956~)
H4.1cm
Edo-mae sushi originated in the Edo period and is very popular today.



『 Basket of Vegetables 』
MIYABI (1977~)
H4.2cm
In the Yin-Yang Five Elements, vegetables were also divided into five colors.



『 Tea Party 』
SHO (1972~)
H4.2cm
The Japanese tea ceremony was also held outdoors, and people loved the changing of the seasons.



『 Sea Bream for Celebration 』
YOKA (1968~)
H3.3cm
Sea bream is an auspicious fish that is essential for celebrations.



『 Special Day 』
IPPU (1970~)
H4.2cm
A cake that celebrates everyone's memorable special day.

3 Lyrical netsuke that sings from the heart.

Special Exhibition in March “Seasons depicted by Netsuke”

■ March 1 (Wed) to 31 (Fri)

Japanese people have long cherished seasonal events and customs. Netsuke also expresses a delicate sense of beauty in enjoying the seasons, and the way they cut out the characteristics of the season is like almanac of seasonal words for poets. The appreciation "Okage-sama," or gratitude to nature and respect for one's ancestors, is alive and well in these events. The heart of the Japanese people is embodied in the netsuke.



『 White-eye's Favorite 』
MEIKAN (1936~)
H3.9cm
White-eyes seeking nectar are a common sight in early spring.



『 Yuka-biraki 』
KUKAN (1968~)
H4.0cm
A breeze from the river brings coolness to the friendly couple.



『 Yugao (Lady in the Tale of Genji) 』
AKIRA (1949~)
H4.4cm
A beautiful and thin-lived princess in the Tale of Genji.



『 November Festival 』
TOUN (1960~)
H4.3cm
A vigorous festival at the end of the year. People wish for prosperous business.



『 Deep Winter 』
MASAYUKI (1954~)
H3.3cm
The coldest season. After this, signs of spring can be felt.